



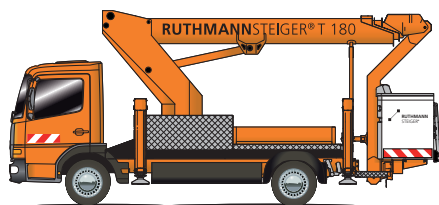
**RUTHMANN**  
professionals at work

## STEIGER® T 180.1



### RUTHMANN STEIGER® T 180.1

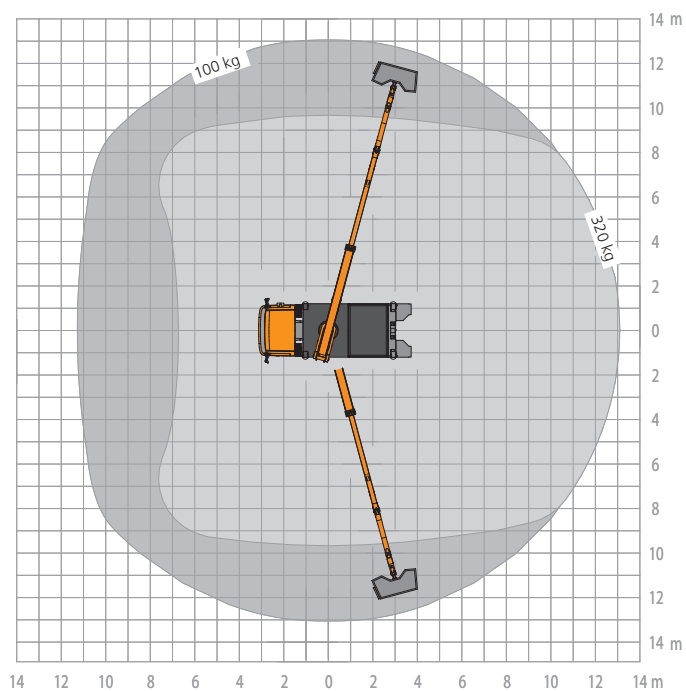
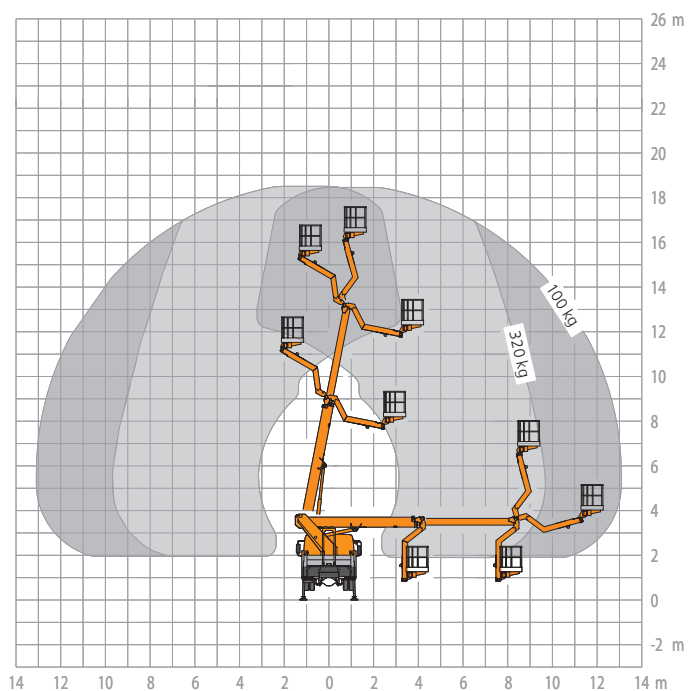
– Flexibility down the line!



- 18.4 m working height
  - 13.0 m outreach
  - 195° Swivelling angle of the RÜSSEL® (jib)
  - 320 kg working cage load
  - diverse base vehicles  $\geq 7,49$  t (GVW)\*
- \*gross vehicle weight

For further information visit: [www.ruthmann.de/t180en](http://www.ruthmann.de/t180en)

- wheelbase carrier chassis  $\geq 3,6$  m
- minimal jacking width through vertical jacks within the contours of the vehicle.
- standard aluminum cage
- optional plastic cage
- permissible inclination 5°
- automatic set-up/retraction system







**RUTHMANN**  
professionals at work

## STEIGER® T 180.1

As a community, power supply company, craftsman's enterprise or rental company, you want to use your STEIGER® as flexibly as possible. For example for the maintenance of lighting, tree trimming or for installation work. Our RUTHMANNSTEIGER® T 180 is a multi-talent and covers the entire range of applications.

At a working height of up to 18.4 m, combined with a lateral reach of up to 13.0 m and a swivelling angle of the RÜSSEL® of up to 195° you can reach even hard-to-reach sites in trees, halls and cables in no time at all.

Narrow curves in road traffic – no problem – with this STEIGER® original. With a wheelbase of  $\geq 3.6$  m, the T 180 is always agile and flexible.

The jacking procedure does not impede the flow of traffic because the four hydraulic vertical jacks are within the contours of the vehicle. Added flexibility and stability are guaranteed by the permissible

5° inclination – with automatic reach adjustment – even at sites sloping downwards or upwards.

The RUTHMANNSTEIGER® T 180.1 is serially equipped with an aluminium working cage. Because the working cage (work space 1.85 m x 1.00 m) is attached to the rear of the vehicle, the user can reach his workplace quickly and comfortably and even has enough space for his tools. The carrying capacity in the cage is 320 kg with the standard alu cage or 300 kg with the optional plastic cage. The cage rotating device (2 x 90°), automatic set-up/retraction mechanism and memory function are standard equipment on the STEIGER®.

Please contact us - by phone, fax or e-mail. We would be pleased to give you more information about the performance range of our proven Steiger and demonstrate the benefits and advantages of our product for you!



### RUTHMANNSTEIGER® T 180.1

	Working height	18,40 m		Permissible inclination	5°***
	Lifting height	16,40 m		Permissible total weight $\geq$	7.490 kg
	Outreach	13,00 m**		Range of rotation	500°
	Working cage size	1,85 x 1,00 m		Swivelling angle of the jib / RÜSSEL®	195°
	Size of working	320 kg		Driving Licence	C 1/3
	Total height $\geq$	3,40 m		Wheelbase carrier chassis $\geq$	3,60 m
	Total length of vehicle $\geq$	7,47 m		Telescopic extension:	3,78 m

\*\* depending on load, angle of rotation and outfit  
\*\*\* with restriction of performance data

All measurements and weights are approximate and refer to the standard basic execution. Technical alterations reserved. STEIGER®, GELENKSTEIGER®, RÜSSEL®, FLEXILOADER® and CARGOLOADER® are registered trademarks of RUTHMANN GmbH & Co. KG

**RUTHMANN GmbH & Co. KG**  
P.O. Box 1263 - 48705 Gescher-Hochmoor - GERMANY  
Fon: +49 28 63 204-0 - Fax: +49 28 63 204-212  
Internet: www.ruthmann.de - E-Mail: export@ruthmann.de