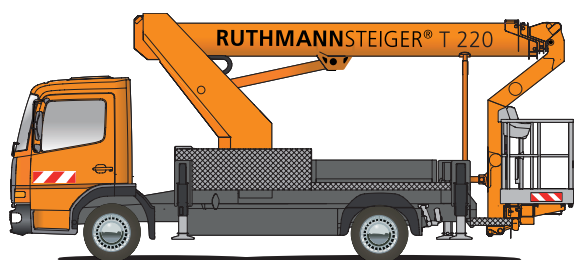


RUTHMANN
professionals at work

STEIGER® T 220.1

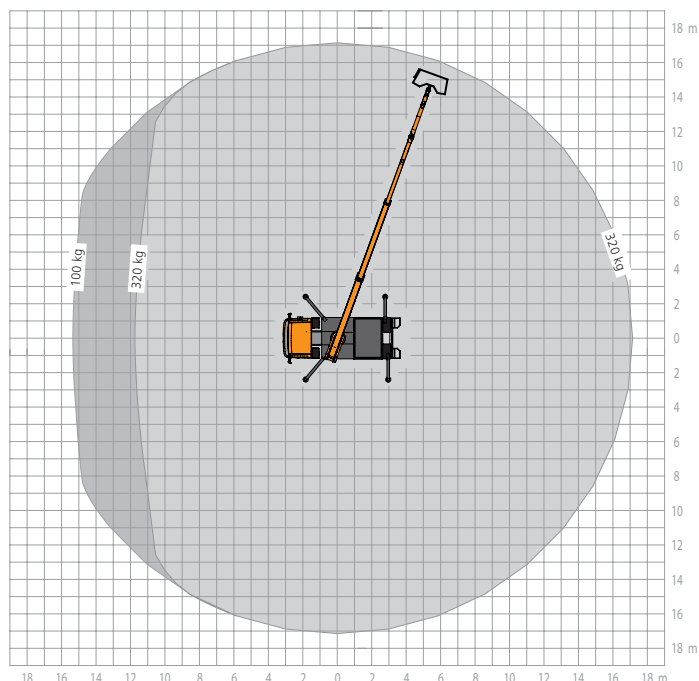
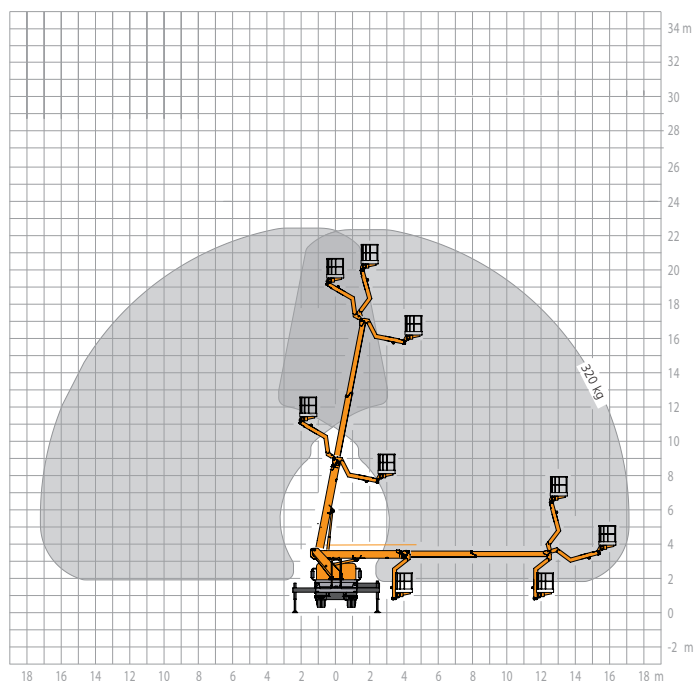


RUTHMANNSTEIGER® T 220.1 A STEIGER® for all events!

- 22.4 m working height
- 320 kg working cage load capacity
- full lateral outreach of 17 metres at maximum cage capacity
- 195° swivelling angle of the RÜSSEL® (jib)
- horizontal/vertical jacking mechanism
- optional vertical jacks for jacking within the contours of the vehicle
- permissible inclination 5°
- sufficient load capacity on a 7.49 ton chassis
- aluminium working cage 1,85 m x 1,00 m
- a plastic working cage for added safety (twice as much insulation) available as an option
- rotating cage (2 X 90°)
- total vehicle length: $\geq 7,40$ m
- information and diagnostic display in the working cage
- short wheelbase $\geq 3,62$ m and many other innovative functions



For further information visit: www.ruthmann.de/t220en





RUTHMANN
professionals at work

STEIGER® T 220.1

The STEIGER® T 220.1 is a real multitalent for you as a rental company, municipality, horticulture company and landscape gardener, building cleaner or painter. With a working height of 22.4 m, a carrying capacity of 320 kg (!) and – even with the just mentioned cage load – the full lateral outreach of 17.00 m, the T 220.1 carries out all your jobs with style.

A further important criterion of this model is: sufficient reserve in payload, e.g. for mounting of a tool box. This is an important aspect especially for municipalities and contractors.

Essential for the daily keen operativeness is also the permissible inclination of positioning of up to 5°, which – electronically warranted – guarantees also in case of most difficult places of operation the safe function of the STEIGER®.

The new geometry of the cage, which goes along with a considerable increase of the usable cage area, as well as the new operating panel with integrated display - the **RUTHMANN** Information and Diagnosis System – offers real advantages during daily use. Thanks

to the installation of the working cage in the rear (working area 1,85 m x 1,00 m) the place of work can be reached fast and conveniently and offers sufficient place for the operator and his tools. With an extreme high carrying capacity of 320 kgs the STEIGER® T 220.1 guarantees also with high cage load a maximum of stability and safety.

Furthermore the automatic positioning system delivered as standard outfit ensures that you reach your working position easily and in no time. You can just as quickly bring the STEIGER® back into its travelling position after finishing work. Only depressing one push button is necessary to activate this standard automatic return to basic position. With the T 220.1 you can carry out jobs under confined road and space conditions without any problems, because the horizontal-vertical jacking can be extended in no time within the vehicle profile or at each other jacked position.

With a working cage which can be swivelled by 2 x 90° and an angle of rotation of the articulated top boom „Rüssel“ (cage

lifting arm) of 195° you can rely on a high degree of agility also under most difficult conditions.

And in narrow areas and situations within the „jungle of big city“, you will profit from the short wheelbase $\geq 3,62$ m, which will bring you fast and safely also through the most narrow road bend.

Truck-mounted access platforms should cover a wide range of applicabilities by means of flexible and multiple

functions. The **RUTHMANN-STEIGER® T 220.1** is exactly the right tool for all these and a lot more purposes.

Contact us – by phone, fax or e-mail. We would be pleased to provide you detailed information about the performance spectrum of our proven STEIGER® and demonstrate profit and advantages for you.



RUTHMANNSTEIGER® T 220.1

	Working height	22,40 m		Total length of vehicle \geq	7,47 m
	Lifting height	20,40 m		Perm. siting inclination	5°**
	Lateral outreach	17,00 m*		Perm. total weight \geq	7.490 kg
	Size of working cage	1,85 x 1,00 m		Range of rotation	500°
	Carrying capacity of working cage	320 kg		Swivelling angle of the jib / RÜSSEL®	195°
	Overall height \geq	3,40 m		Driving Licence	C 1/3
* depending on load, angle of rotation and outfit				Wheelbase carrier chassis \geq	3,62 m
** with restriction of performance data					

All measurements and weights are approximate and refer to the standard basic execution. Technical alterations reserved. **STEIGER®**, **GELENKSTEIGER®**, **RÜSSEL®**, **FLEXILOADER®** and **CARGOLOADER®** are registered trademarks of **RUTHMANN GmbH & Co. KG**

Ruthmann GmbH & Co. KG
P.O. Box 1263 - 48705 Gescher-Hochmoor - GERMANY
Fon: +49 28 63 204-0 - Fax: +49 28 63 204-212
Internet: www.ruthmann.de - E-Mail: export@ruthmann.de